

General information

- ✓ In accordance with the S.M.A.C.N.A.
- ✓ Base material using for ducts and fittings is galv. steel
- ✓ Longitudinal Seams: Continuously weld of all seams.
- ✓ Circumferential Seams: Circumferential seams on shop fabrications shall be continuously welded.
- ✓ Possibility of line welding
- ✓ Packaged items can be marked with QR codes or individual numbers - referring to design numerology.

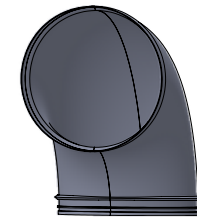


CLEAN ROOM SOLUTIONS 11AI

Available system:

- welded
- pressed

3D Model:




Let Us do it for You!

For more information visit our website or contact us

 info@venttrade.eu

 www.venttrade.eu

 Abrahama 1A/2.01
80-307 Gdańsk
Poland

Standard connection in 11AI (Bell & Spigot)

Male Type:



Female Type:

